

WOODCRAFT TIMES

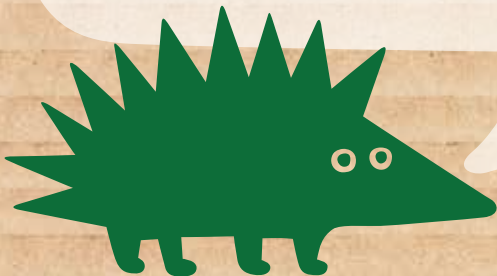
Welcome to our Newsletter!

Dear Members and Parents,

Welcome to the 3rd issue of the Harrow Woodcraft Times and thank you to all of you who have sent your greetings and support. I'm pleased to report that the 'Friends of HWcF' WhatsApp group is now up and running and for those of you who haven't joined but wish to, please send your details and telephone number to Duncan Buttle, the host. Duncan's email is;

harrowwoodcraftfolk@yahoo.co.uk

Photos are coming in and more are welcome. It is essential to put the year against the photo, if possible, as this helps to place them into context. Where and how we can use them will be for future issues. A memories and anecdotes page could be the way forward, so start sending those memories in so they can be shared.



MARCHS FULL MOON

is called

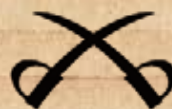
CROW OR CRUST OR SAP

OR WORM!



Q) What word is always spelt wrong in the Dictionary?

A) Wrong.



If you saw the symbol on a map what would it mean?

(Answer on the last page)



HOW TO BUILD A CAMP FIRE

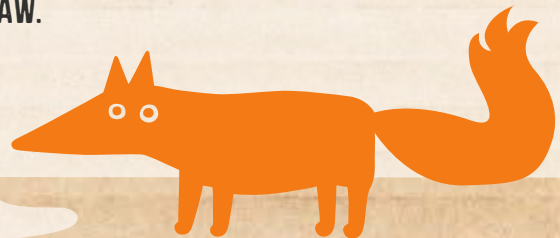
PART ONE



Camp fires have been part of the way to camp for years, learnt from the Native American Indians initially and adopted by the Scouts and the Woodcraft Folk. Like any craft, it has to be taught and practiced before you can be skilled and safe.

HELLO! MY NAME IS FIREFOX AND THESE ARE THE SKILLS NEEDED TO BUILD A CAMP FIRE:

1. THE KNOWLEDGE OF WHICH TYPES OF WOOD ARE BEST FOR MAKING A CAMP FIRE AND THOSE TO AVOID.
2. HOW TO USE AND LOOK AFTER A HAND AXE AND A BOW SAW.
3. THE TYPES OF FIRES AND THEIR USE.
4. HOW TO LAY AND LIGHT A FIRE WOODCRAFT FASHION.



1.



**ASH
IS AWESOME!**



**OAK
IS MORE THAN OK!**



**BEECH
IS BRILLIANT!**



**SYCAMORE
IS SUPER!**

Woodcraft Folk



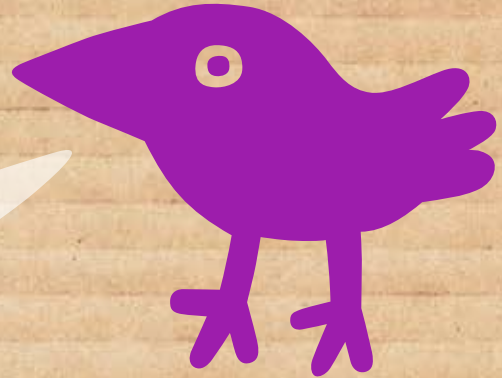
Even more!



TYPES OF TREES

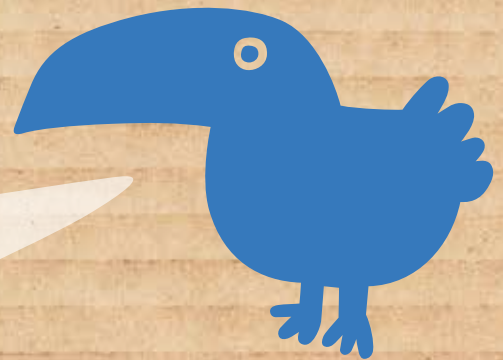
'LEARN
THE RHYME'

Oak logs will warm you well,
If they're old and dry.
Larch logs of pine wood smells,
But sparks will fly.
Beech logs for Christmas time.
Yew logs warm well.
Scotch logs it is a crime
For anyone to sell.



Birch logs will burn too fast.
Chestnut scarce at all,
Hawthorn logs are good to last,
If cut at the fall.
Holly logs will burn like wax.
You should burn them green.
Elm logs like smouldering flax,
No flame to be seen.

Pear logs and apple logs,
They will scent your room.
Cherry logs across the dogs,
Smells like flowers in bloom.
But ash logs smooth and grey,
Burn them green and old.
Buy up all that come your way.
They are worth their weight in gold



WHAT DO THESE 3 CREATURES HAVE IN COMMON?

Woodcraft Folk



and more!

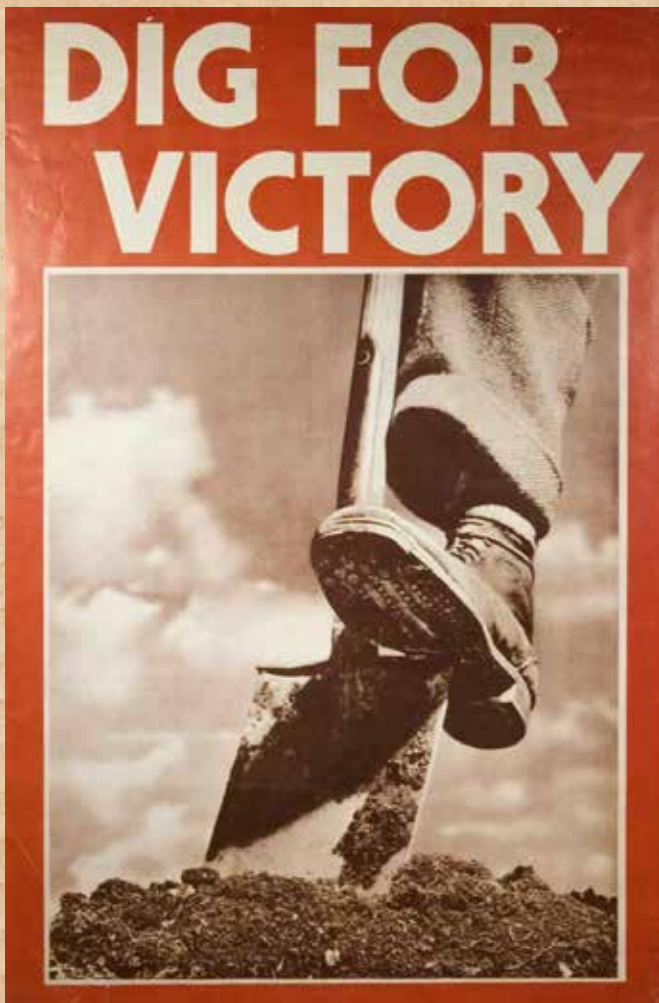


THE WAR YEARS 1939-45

HISTORY OF THE HARROW WOODCRAFT FOLK.Pt3

In 1939 together with 800 Woodcrafters the members of Watford and Harrow attended the International Camp at Wandre in Belgium, which was attended by 2500 Red Falcons from those countries in Europe which had not yet become part of the Fascist Empire. Long-standing friendships were made at this camp but it was to be the last contact that the Folk were to have with their Red Falcon comrades for seven long years. The British delegation returned from Wandre three days before the outbreak of the Second World War in September 1939.

As the war dragged on the young group leaders and assistant leaders left to join the various armed forces and the groups began to close until only one group remained open, the Lone Pine Fellowship, which in spite of air-raids, child evacuation and war work, Badger and Heather Colbert kept open. Weekend camps were run at Crows Nest Farm, to which the children brought their own share of rationed food to contribute to the catering and at which the tents had to be camouflaged. It was to the Lone Pine Fellowship that the young group and assistant leaders returned to when on leave to maintain their contact with the Folk and keep in touch with their friends.



With the return of peace, some of those who went to war returned and helped to re-open the old groups. Some never returned and were greatly missed. The whole experience of the Second World War and tragic loss of comrades and friends, gave added incentive to build and develop the Woodcraft Folk in Harrow.



Woodcraft Folk



and more!



2020 CAMP DATES!

W/E Camp: 20/21st June.

W/E Camp: 18/19th July.

Summer Camp: 8th to 15th August.

To be held at Wells-next-the Sea, Norfolk.

Cost £90.00/person. Details from Group leaders.
(Only 25 places and 15 booked in to date. So book now to ensure your place).



W/E Camp: 19/20th September.

PAPER FUN!

Are you up for a challenge like these Pioneers? Given some newspapers and Sellotape can you design and make clothes out of these materials?
Have a go, take a photo and send it in for publishing.

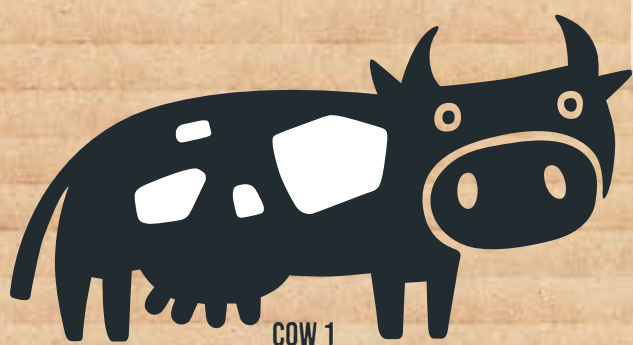


Woodcraft Folk

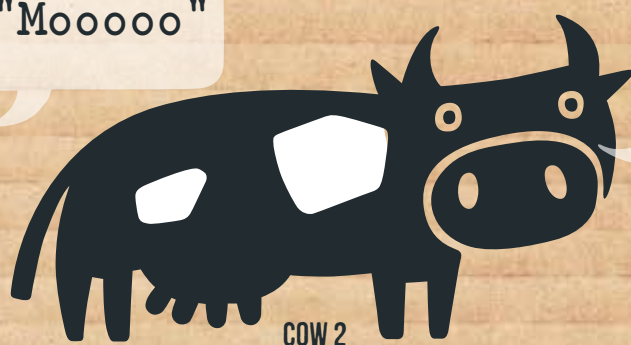


and more!





"Mooooo"



Hey!
I was
going to
say that."

TO END THE THIRD ISSUE OF HWT HERE
ARE SOME WONDERFUL PAINTED STONES
BY TWO OF OUR ELFINS, LIVIE & HENRY

Thank you!



WhatsApp Group

One way of ensuring everyone is kept informed would be a WhatsApp Group for parents and members. Is this a good idea? Let us know what you think.

Editor: John Woolf

Email: johnwoolf9@gmail.com
harrowwoodcraftfolk.btck.co.uk

ANSWERS: MAP ICON 'BATTLEFIELD'

ANSWERS: THE 3 CREATURES ALL LIVE IN TREES